

IMPORTANT PERSONAL SAFETY INSTRUCTIONS


WARNING – To reduce the risk of fire, electric shock, or injury to persons using this appliance, follow basic precautions, including the following:

1. Read all instructions before using the appliance.
2. To avoid the possibility of fire or explosion:
 - a. Do not wash items that have been previously cleaned in, washed in, soaked in, or spotted with gasoline, dry-cleaning solvents, other flammable or explosive substances as they give off vapors that could ignite or explode.

Any material on which you have used a cleaning solvent, or which is saturated with flammable liquids or solids, should not be placed in the washer until all traces of these liquids or solids and their fumes have been removed.

There are many highly flammable items used in homes, such as: acetone, denatured alcohol, gasoline, kerosene, some liquid household cleaners, some spot removers, turpentine, waxes and wax removers.
 - b. Do not add gasoline, dry-cleaning solvents, or other flammable or explosive substances to the wash water. These substances give off vapors that could ignite or explode.
 - c. Under certain conditions, hydrogen gas may be produced in a hot water system that has not been used for 2 weeks or more. **HYDROGEN GAS IS EXPLOSIVE.** If the hot water system has not been used for such a period, before using a washing machine or combination washer-dryer, turn on all hot water faucets and let the water flow from each for several minutes. This will release any accumulated hydrogen gas. As the gas is flammable, do not smoke or use an open flame during this time.
3. Do not allow children to play on or in the appliance. Close supervision of children is necessary when the appliance is used near children.
4. Before the appliance is removed from service or discarded, remove the door to the washing compartment.
5. Do not reach into the appliance if the agitator is moving.
6. Do not install or store this appliance where it will be exposed to the weather.
7. Do not tamper with controls.
8. Do not repair or replace any part of the appliance or attempt any servicing unless specifically recommended in published user-repair instructions that you understand and have the skills to carry out.
9. The agitator should not be removed. If the agitator is removed, it must be replaced by pushing down completely and the locking screw tightened before the washer is operated.
10. This appliance must be properly grounded. Never plug the appliance cord into a receptacle which is not grounded adequately and in accordance with local and national codes. See installation instructions for grounding this appliance.

Save These Instructions

Appliances with the  symbol on the data plate have been listed with Underwriters' Laboratories, Inc. Those with a CSA Monogram on the data plate have been certified by the CSA Testing Laboratories as complying with Canadian Standards Association requirements.

Nevertheless, as with any equipment using electricity and having moving parts, there are potential hazards. To use this appliance safely, the operator should become familiar with the instructions for operation of the appliance and always exercise care when using it.

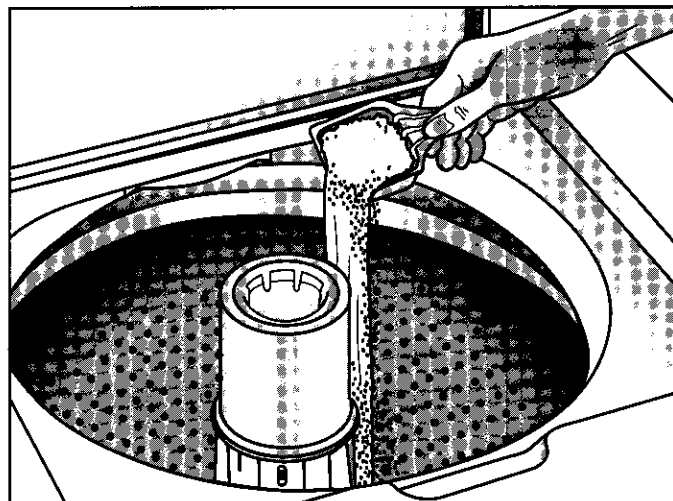
USING LAUNDRY ADDITIVES

Detergent

Use either liquid or granular laundry detergent. **Add measured amount of detergent to washtub before loading.**

Read the manufacturer's instructions and use the correct amount. Most instructions are for washing an "average" load. If the size of the load is extra large, the degree of soil is heavier than average and the water is harder than 6 grains per gallon, more detergent should be used.

Wipe up any spills of liquid laundry detergent on the washer.

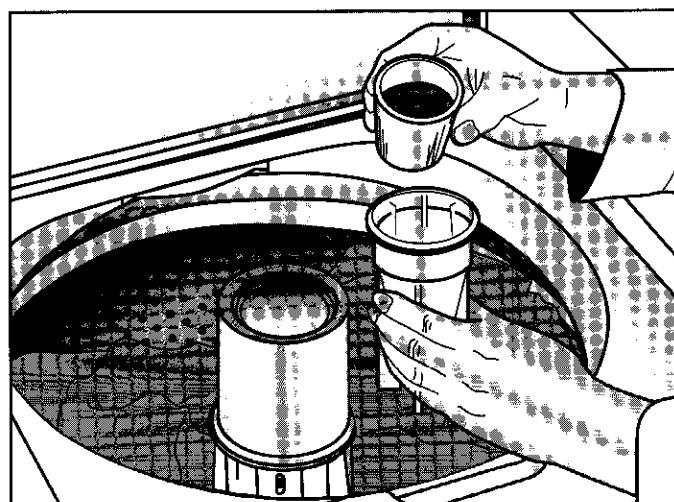


Fabric Softener

When using rinse-added fabric softener, add the recommended amount to the cup located in top of the agitator. The cup may be lifted out for filling. Add warm water to bring liquid level to the indicated **FILL LINE** in the cup. Diluted fabric softener will automatically be added to the rinse. **(Always dilute fabric softener with water.)**

Do not interrupt the spin following the wash cycle because the softener will go into the washtub at the wrong time.

The area in and around the dispenser cup should be flushed and cleaned with hot water and a soft brush periodically.



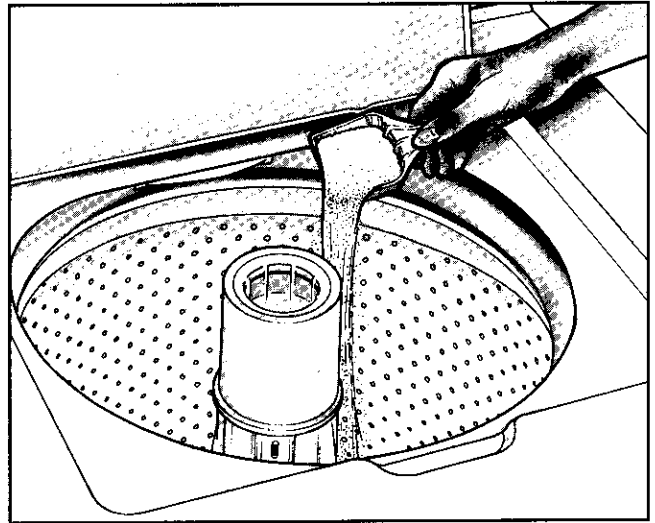
USING THE WASHER

Detergent

Use either liquid or granular laundry detergent. Add measured amount of detergent to washtub before loading.

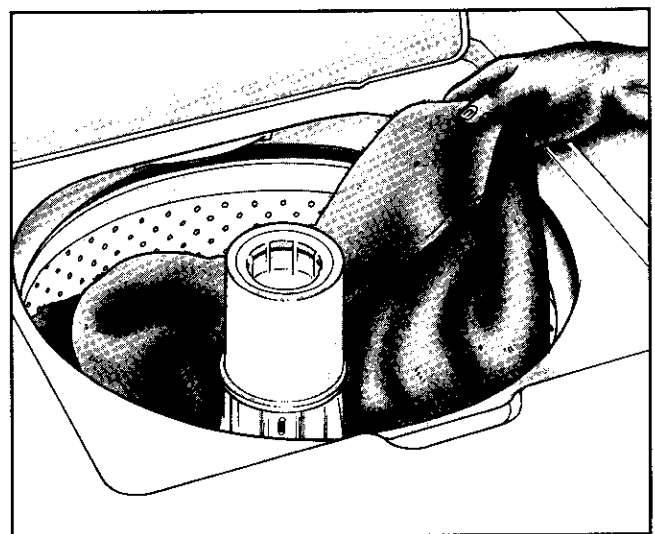
Read the manufacturer's instructions and use the correct amount. Most instructions are for washing an "average" load. If the size of the load is extra large, the degree of soil is heavier than average and the water is harder than 6 grains per gallon, more detergent should be used.

Wipe up any spills of liquid laundry detergent on the washer.



Loading the Washer

Place dry, unfolded clothes loosely in the tub, up to the top row of holes for a maximum load. Do not pack or wrap items around the agitator. See MAYTAG LAUNDERING GUIDE for suggestions on sorting. Be sure to empty all pockets, mend any holes or tears and pretreat spots, stains and heavily soiled areas.



Bleach

When using **liquid chlorine bleach**, carefully measure the amount of bleach recommended on the bottle label. General recommendations are 1/8 cup for each 2 gallons of wash water. Amount of wash water in: EX. SMALL - 10 gallons (8 Imperial gallons; 38 liters); SMALL - 12 gallons (10 Imperial gallons; 45 liters); MEDIUM - 14 gallons (12 Imperial gallons; 53 liters); LARGE - 17 gallons (14 Imperial gallons; 64 liters); EXTRA LARGE - 19 gallons (16 Imperial gallons; 72 liters).

Select water level, water temperature, desired cycle and start washer. **Dilute chlorine bleach as recommended by the bleach manufacturer (generally 4 parts water to 1 part bleach)**. A few moments after the washing action starts, lift the lid and pour the diluted bleach solution around the agitator. Then close the lid immediately and re-start the washer.

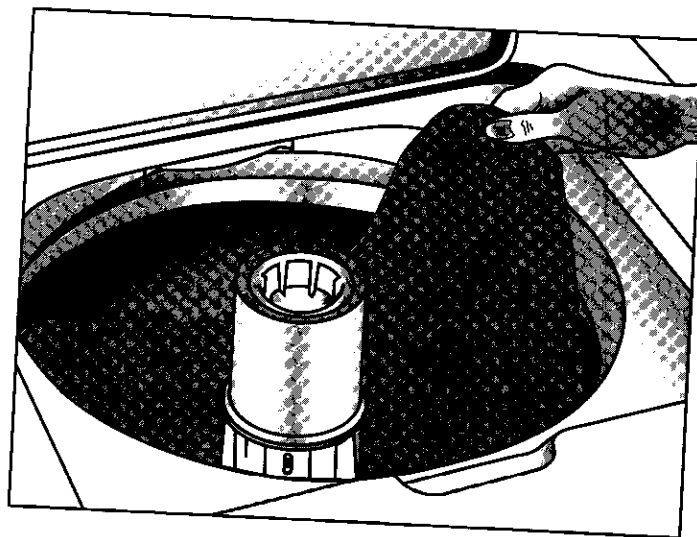
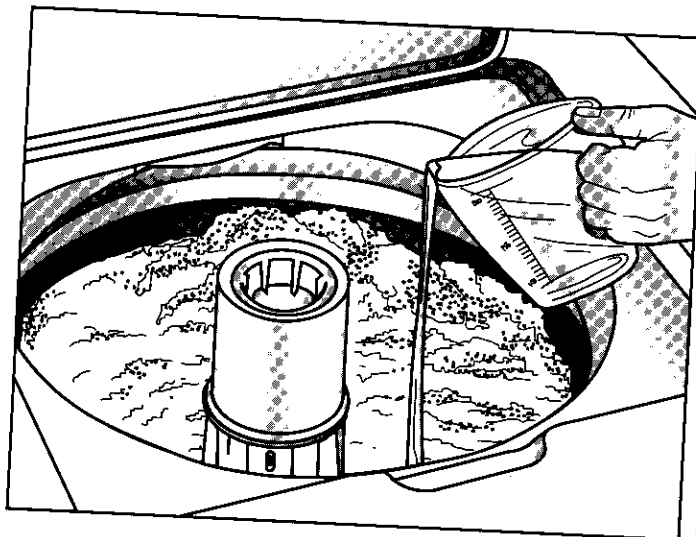
Be careful whenever you use liquid chlorine bleach. It is a powerful chemical and can cause fabric damage, such as tears or color loss, if not used properly. Do not pour directly on fabrics. Always dilute with water. Wipe up spills with a paper towel.

Non-Chlorine bleach may be added with the detergent. Follow the instructions on the package. If used improperly, fabric damage may occur, such as color loss.

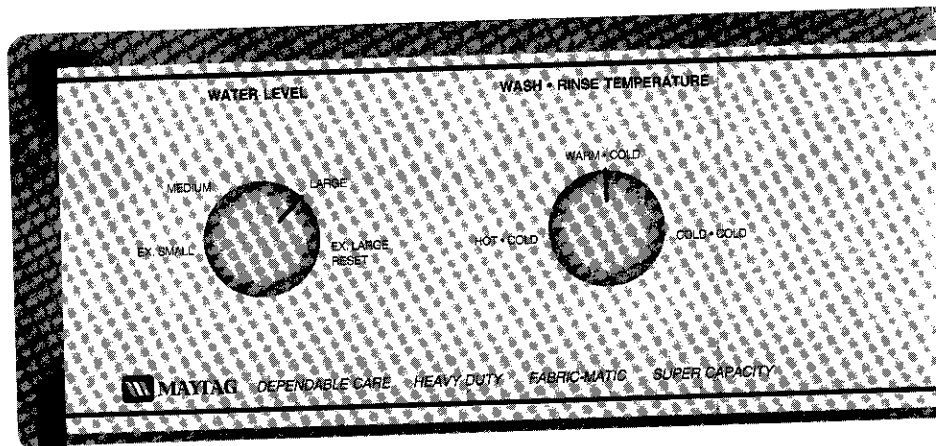
LOADING THE WASHER

For best results, add measured amount of detergent to washtub before adding the sorted clothes load.

Put dry, unfolded clothes loosely in the tub, up to the top row of holes for a maximum load. Do not pack or wrap items around the agitator. See MAYTAG LAUNDERING GUIDE for suggestions on sorting. Be sure to empty all pockets, mend any holes or tears and pretreat stains, spots and heavily soiled areas.



OPERATING INSTRUCTIONS



Features may vary.

Select Water Level

Turn the selector knob to the setting that matches the size of the load.

The **pre-set selector knob** (not on all models) can be set to four or five distinct settings depending on the model – EX. SMALL, SMALL, MEDIUM, LARGE or EX. LARGE.

The **infinite selector knob** (not on all models) can be moved to each water level or any point in between.

If more water is needed once the fill is complete, move the knob to Reset, then to the desired setting.

For best washing results, clothes must circulate freely. If too little water is used, poor cleaning, linting and excessive wear may result. Use the following as a guide to select the proper water level:

Ex. Small – 1/4 full of clothes.

Small (not on all models) – 1/4 to 1/3 full of clothes.

Medium – 1/3 to 1/2 full of clothes.

Large – 1/2 to 3/4 full of clothes.

Ex. Large – 3/4 to full of clothes.

NOTE: When laundering permanent press items or items of delicate construction, washable woolens or loosely knit items, never use less than the MEDIUM setting. This will minimize shrinkage, wrinkling and pulling of seams.

NOTE: If you experience problems selecting the correct water temperature, or cycle, or starting the washer, refer to page 8 for additional information before calling for service.

Select Wash/Rinse Water Temperature

Turn the selector knob to the water temperature desired.

HOT/COLD - Wash water will be the temperature of the water coming from the hot water faucet. Rinse water will be cold. **Use this setting for heavily soiled whites and colorfast items.**

WARM/COLD - Wash water will be a mixture of water coming from the hot and cold water faucets. Rinse water will be cold. **Use this for items with moderate soil level and colored items.**

COLD/COLD - Wash and rinse water will be the temperature of the water coming from the cold water faucet. **Use this setting to minimize fading of brightly colored items and shrinkage of washable woolens.**

NOTE: Water below 65°F is too cold to dissolve and activate granular laundry detergents.

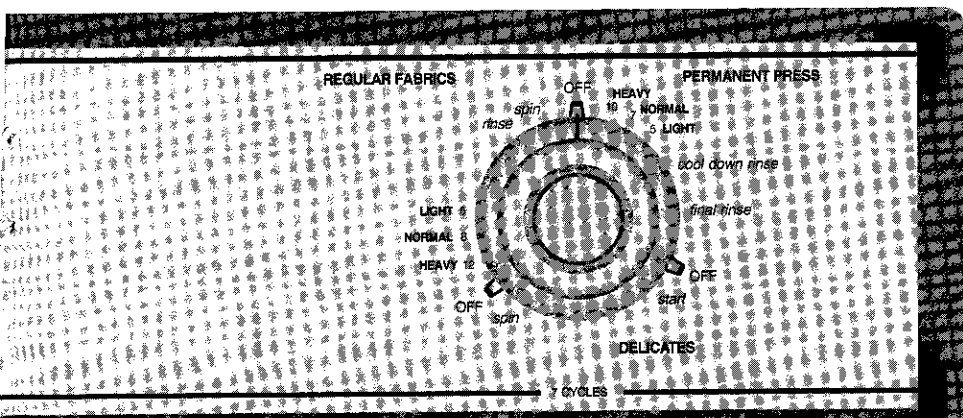
Select Cycle and Time

Push in the cycle control knob and turn clockwise to the proper cycle and wash time.

Washing:

The HEAVY cycle is designed to wash very soiled loads, the NORMAL cycle is for average soiled loads and the LIGHT cycle should be selected for slightly soiled loads.

For **REGULAR FABRIC** loads, turn the control knob to 12 minutes for a HEAVY cycle; to 8 minutes



ary according to model.

for a **NORMAL** cycle; and to 5 minutes for a **LIGHT** cycle.

For **PERMANENT PRESS** loads, turn the control knob to 10 minutes for a **HEAVY** cycle; to 7 minutes for a **NORMAL** cycle; and to 5 minutes for a **LIGHT** cycle. Due to the extra cool down rinse which minimizes wrinkling, this cycle can also be used for non-permanent press items when additional rinsing is needed.

For **DELICATES**, washable woollens, knits or "hand-washable" items, turn the control knob to start. The washer will fill, then alternate between periods of agitation and soak. The entire wash portion of the cycle lasts about 9 minutes, consisting of approximately 5 minutes of soak and 4 minutes of agitation.

Presoaking:

The **SOAK ONLY** cycle (not on all models) is used to soak heavily soiled or stained items for as long as desired. The washer does **not** advance automatically into a wash cycle.

To use the SOAK cycle turn the control knob to start. The washer will fill, agitate for approximately 3 minutes and soak until the control knob is advanced into a wash cycle or spin and drain. Generally, soak periods up to 30 minutes are sufficient for most loads (**overnight soaking is not necessary or recommended**). If following the soak with a regular wash, use up to 50% more than the usual amount of detergent or use a presoak product such as Biz[®] in addition to the regular amount of detergent.

[®]Brand names are trademarks of the respective manufacturers.

Start the Washer

Pull out the cycle control knob to start the washer. You will hear water entering the wash tub.

The washer will fill to the selected water level with the selected wash water temperature. After filling, it will agitate for the selected number of minutes.

The washer will pause briefly throughout each cycle. These pauses are normal.

This washer is designed so that it will not agitate or spin when the lid is open. It will, however, fill with the lid open so water is available for pretreating stains or diluting fabric softener.

Should the lid be opened during a cycle, the washer will stop; when the lid is closed and the control knob is pulled out, the washer will resume its cycle at the point it was interrupted.

NOTE: If the washer stops during the spin, it may be due to an unevenly distributed load. If this happens, push in the control knob, open the lid, redistribute the load, close the lid and pull out the control knob.

Indicator Lights (not on all models)

Depending on the model the washer will have either a **SOAK** light or an **ON** light. The **ON** light stays lit throughout the entire cycle indicating the washer is operating. The **SOAK** light is on during the soak cycle.

MAINTAINING THE WASHER

- Turn off the water faucets after finishing the day's washing. This will shut off the water supply to the washer and prevent the unlikely possibility of damage from escaping water.
- Clean the control panel with a soft damp cloth and glass cleaner. Do not use any abrasive powders or cleaning pads.
- Clean the cabinet with soap and water followed with an appliance wax, if desired.
- The SELF-CLEAN LINT FILTER is located under the agitator on the bottom of the washtub. The lint filter in this washer cleans itself. During the wash and rinse portion of the cycle, lint is collected on the filter. The filter is then flushed automatically during the spin and drain.

STORING THE WASHER

Washers can be damaged if water is not removed from hoses and internal components before storage. Prepare the washer for storage as follows:

- Select NORMAL cycle on Regular Fabrics and add one cup of bleach or white vinegar to a full load of water without clothes. Run the washer through a complete cycle.
- Turn the water faucets off and disconnect the inlet hoses.
- Advance the cycle control knob to the spin of Regular Fabrics and lower drain hose to drain any water that may be in the drain hose.
- Disconnect the washer from the electrical supply and leave the washer lid open to let air circulate inside the tub.

CYCLE DESCRIPTIONS

REGULAR FABRICS*	PERMANENT PRESS*	DELICATES
Fill	Fill	Fill
WASH	WASH	WASH
SPIN & DRAIN	SPIN & PARTIAL DRAIN	SOAK
SPRAY RINSE	Fill with cold water	WASH
SPIN & DRAIN	AGITATE	SOAK
Fill	SPIN & DRAIN	WASH (Select Models)
DEEP RINSE & AGITATE	Fill with cold water	SPIN & DRAIN
SPIN & DRAIN	DEEP RINSE & AGITATE	SPRAY RINSE
SPRAY RINSE**	SPIN & DRAIN	SPIN & DRAIN
FINAL SPIN	SPRAY RINSE**	Fill
	FINAL SPIN	DEEP RINSE & AGITATE
		SPIN & DRAIN
		SPRAY RINSE**
		FINAL SPIN

Special Cycles (not on all models)

SOAK ONLY
Fill
AGITATE
SOAK (infinite)

*The cycle sequence is the same for HEAVY, NORMAL, LIGHT, DELICATES and KNITS; however, the total cycle time will vary and the wash/spin speed may vary.

**Under certain conditions this spray rinse may not occur.

NOTE: The washer will pause briefly throughout each cycle. These pauses are normal.

TOTAL WATER USAGE

	Regular Cycle	Permanent Press Cycle
EXTRA SMALL	Approx. 24 gallons (20 Imperial gallons; 91 liters)	Approx. 30 gallons (25 Imperial Gallons; 114 liters)
SMALL	Approx. 28 gallons (23 Imperial gallons; 106 liters)	Approx. 36 gallons (30 Imperial gallons; 136 liters)
MEDIUM	Approx. 32 gallons (27 Imperial gallons; 121 liters)	Approx. 42 gallons (35 Imperial gallons; 159 liters)
LARGE	Approx. 36 gallons (30 Imperial gallons; 136 liters)	Approx. 48 gallons (40 Imperial gallons; 182 liters)
EXTRA LARGE	Approx. 40 gallons (33 Imperial gallons; 151 liters)	Approx. 54 gallons (45 Imperial gallons; 204 liters)

BEFORE YOU CALL FOR SERVICE

Check these points if your washer...

<p>WON'T FILL</p>	<ul style="list-style-type: none"> • Plug cord into live electrical outlet. • Check fuse or reset circuit breaker. • Turn the control knob to proper cycle and pull knob out to start the washer. If equipped with buttons, be sure they are fully depressed. • Turn both faucets on fully. • Straighten inlet hoses. • Hose filter screens plugged. Disconnect hoses and clean screens.
<p>WON'T AGITATE</p>	<ul style="list-style-type: none"> • Check fuse or reset circuit breaker. • Turn the control knob to proper cycle and pull knob out to start the washer. If equipped with buttons, be sure they are fully depressed. • Close lid and pull knob out to start the washer. For your safety, washer will not agitate or spin unless the lid is closed. • The washer is equipped with a lid switch failure detector. If the lid switch should malfunction, the detector will stop operations for your safety. Call for service.
<p>WON'T SPIN OR DRAIN</p>	<ul style="list-style-type: none"> • Off-balance load. Redistribute the load evenly, close the lid and pull knob out. Check for leveling. Be sure water level is acceptable for load size. • Check fuse or reset circuit breaker. • Straighten hoses. Eliminate kinked hoses. If there is a drain restriction, call for service. • Close lid and pull knob out to start the washer. For your safety, washer will not agitate or spin unless the lid is closed. • Suds lock – caused by too much suds. Rewash without detergent. Use correct amount of a low-sudsing detergent. • The washer is equipped with a lid switch failure detector. If the lid switch should malfunction, the detector will stop operations for your safety. Call for service.
<p>STOPS</p>	<ul style="list-style-type: none"> • Off-balance load. Redistribute the load evenly, close the lid and pull knob out. Check for leveling. Be sure water level is acceptable for load size. • Plug cord into live electrical outlet. • Check fuse or reset circuit breaker. • Turn the control knob to proper cycle and pull knob out to start the washer. If equipped with buttons, be sure they are fully depressed. • Close lid and pull knob out to start the washer. For your safety, washer will not agitate or spin unless lid is closed. • This may be a pause or soak period in the cycle. Wait briefly and it may start. • The washer is equipped with a lid switch failure detector. If the lid switch should malfunction, the detector will stop operations for your safety. Call for service.
<p>LEAKS WATER</p>	<ul style="list-style-type: none"> • Make sure hose connections are tight. • Make sure end of drain hose is correctly inserted and secured to drain facility. • Extended soaking – soak for 30 minutes or less.
<p>IS NOISY</p>	<ul style="list-style-type: none"> • Make sure washer is level and firm to the floor. • Weak floors can cause vibration and walking.
<p>FILLS WITH THE WRONG TEMPERATURE WATER</p>	<ul style="list-style-type: none"> • Turn both faucets on fully. • If equipped with a temperature selector knob, be sure it is set directly on a temperature setting and not between settings. • Make sure temperature selection is correct. • Make sure hoses are connected to correct faucets and inlet connections. Be sure water supply is regulated correctly. Flush water line before filling washer. • Check the water heater. It should be set to deliver a minimum 120°F (49°C) hot water at the tap. Also check water heater capacity and recovery rate. • Hose filter screens plugged. Disconnect hose and clean screens

NOTE: For further information contact Maytag Customer Assistance:

U.S. 1-800-688-9900
Canada 1-800-688-2002

AUTOMATIC WASHER WARRANTY

Full One Year Warranty

For **one (1) year** from the date of original retail purchase, any part which fails in normal home use will be repaired or replaced free of charge.

Limited Parts Warranty

After the first year from the date of original retail purchase through the time periods listed below, the designated parts which fail in normal home use will be repaired or replaced free of charge for the part itself, with the owner paying all other costs, including labor.

Second Year – All parts.

Third through Fifth Year – The drive motor. All parts of the solid state controls (if so equipped).

Third through Tenth Year – All parts of the transmission assembly.

Additional Limited Warranty Against Rust

Should an exterior cabinet, including the top, lid, and baseframe, rust during the five year period starting from the date of original retail purchase, repair or replacement will be made free of charge during the first year. After the first and through the fifth year, repair or replacement will be made free of charge for the part itself, with the owner paying all other costs, including labor.

This full warranty and the limited warranties apply when the appliance is located in the United States or Canada. Appliances located elsewhere are covered by the limited warranties only, which include parts which fail during the first year.

To Receive Warranty Service

To locate an authorized service company in your area, contact the Maytag dealer from whom your appliance was purchased or call Maytag Customer Service. Should you not receive satisfactory warranty service, call or write:

Maytag Customer Assistance
c/o Maytag Customer Service
P.O. Box 2370
Cleveland, TN 37320-2370
US 1-800-688-9900
CANADA 1-800-688-2002

When contacting Maytag Customer Service be sure to provide the model and serial number of your appliance, the name and address of the dealer from whom you purchased the appliance and the date of purchase.

This Warranty gives you specific legal rights, and you may also have other rights which vary from state to state.

Should you still have a problem, write to: Major Appliance Consumer Action Program, 20 North Wacker Drive, Chicago, Illinois 60606. MACAP is an industry sponsored but independent group of consumer experts who receive and act on complaints from appliance owners.

NOTE: When writing about an unsolved service problem, please include the following information:

- (a) Your name, address, and telephone number;
- (b) Model number and serial number (found on control panel cover) of your appliance;
- (c) Name and address of your dealer and date the appliance was bought;
- (d) A clear description of the problem you are having;
- (e) Water hardness, detergent brand and amount, water temperature and cycle used.

CONSUMER PUBLICATIONS

For additional information on laundering and purchasing other major appliances, order the following booklets from Maytag at the prices indicated. Please send your name, address, booklet title, form number and payment to: Maytag, Consumer Education Department, One Dependability Square, Newton, IA 50208. Allow 6-8 weeks for delivery.

The Facts of the Laundry — 181YG	50¢	
Stain Removal Guide — 19YG	50¢	
Choosing the Right Detergent — 184YG	50¢	
Special Baby, Special Clean-up — 191 YG	50¢	
Appliance Buying Guides	50¢	EACH
Washer — 211YG; Dryer — 212YG; Dishwasher — 213YG;		
Refrigerator — 276YG; Cooking Appliance — 277YG		